

AIR BAG SAFETY

- Children and small adults should ride in the back seat of a vehicle with a passenger-side air bag.
- Children, 12 and under, can be killed by the air bag.
- The center of the BACK SEAT is the SAFEST place for children.
- NEVER put a rear-facing child seat in the front.
- Sit as far back as possible from the air bag.
- ALWAYS use SEAT BELTS and CHILD RESTRAINTS.



Every effort was made to provide accurate information in this pamphlet, as of date of publication. Changes may occur after this date. For further information, please contact one of the agencies listed below:

Southern Region EMS Council, Inc.

6130 Tuttle Place
Anchorage, AK 99507-2041
Telephone (907) 562-6449

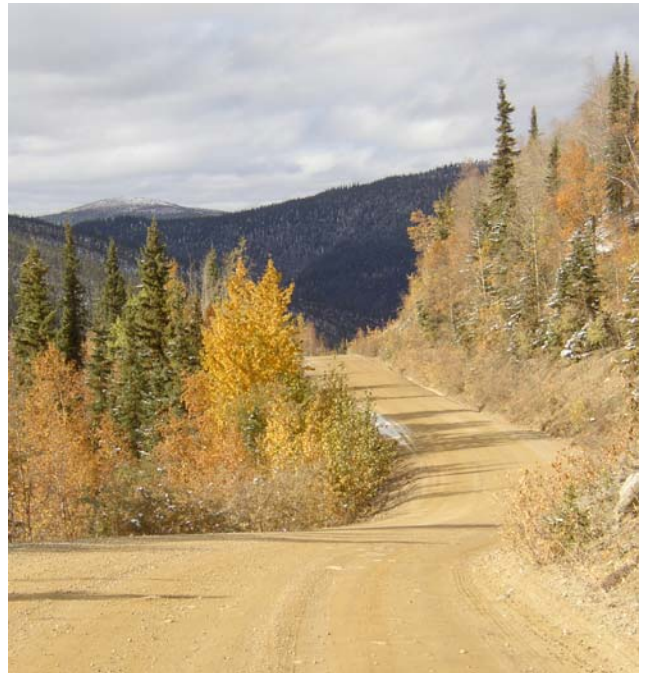
Southeast Region EMS Council, Inc.

100 Clothilde Bahovec Way
Sitka, AK 99835
Telephone (907) 747-8005

Interior Region EMS Council, Inc.

2503 18th Ave.
Fairbanks, AK 99709
Telephone (907) 456-3978

HELP ALONG THE WAY



**Emergency Medical
Services for
Alaska Travelers**

SOUTHEAST ALASKA (cont.)

HYDER:	1-800-461-9911 - Stewart, BC Ambulance (604) 636-2221 - Stewart, BC Hospital
JUNEAU:	EMERGENCY: 911 796-8900 - Hospital 586-5322 - Fire Dept./EMS
KAKE:	785-3393 - Police 785-3333 - Health Center
KETCHIKAN:	EMERGENCY: 911 225-5171 - Hospital 225-9616 - Fire Dept/EMS
METLAKATLA:	886-4741 - Fire Dept/EMS 886-4744 - Clinic
PELICAN:	735-2245 - Fire Dept/EMS 735-2250 - Health Center Channel 16 - Marine VHF
PETERSBURG:	EMERGENCY: 911 772-4291 - Hospital 772-3329 - Police
PRINCE RUPERT:	EMERGENCY: 911 (604) 624-2171 - Hospital
SITKA:	EMERGENCY: 911 747-3241 - Sitka Community Hospital 966-2411 - Mt. Edgecumbe Hospital 747-3233 - Fire/EMS
SKAGWAY:	EMERGENCY: 911 983-2255 - Clinic 983-2450 - Fire Dept
TENAKEE SPRINGS	736-2211 - Firehall/Rescue Boat
THORNE BAY	EMERGENCY: 911 (828-3399 cell) 828-8201 - Fire Dept. 828-3380 - City Hall
WRANGELL:	EMERGENCY: 911 874-7000 - Hospital 874-3223 - Fire Dept/EMS
YAKUTAT:	EMERGENCY: 911 784-3275 - Clinic 784-3206 - EMS

IT PAYS TO BE PREPARED

This Emergency Medical Services pamphlet was designed to help **you** be prepared for a crash, accident, or medical emergency while you are traveling through our Great Land. The pamphlet includes an index of emergency telephone numbers around the state and it is divided into two main sections.

- The first section contains a map of the Alaska and Yukon highway systems and a list of emergency telephone numbers organized by the name of the highway and its milepost.
- The second section contains a map and information about emergency medical services along Alaska's Marine Highway system. Included is a list of the communities that are stops on the Marine Highway and the emergency phone number in each. Telephone numbers of hospitals and health clinics are also listed.

To help assure your safe trip through Alaska, we have included some important Alaska laws that apply to all motorists. We hope you will become familiar with these laws and make a commitment to abide by them. Please keep this pamphlet handy so you will be able to respond quickly in an emergency.

ABIDE BY ALASKA'S LAWS

Alaska Seat Belt and Child Restraint Laws

Alaska requires every occupant of a motor vehicle to be buckled up. All children under four years of age must be properly secured in a federally-approved child safety seat when being transported in a motor vehicle. A child four years of age or older, riding in a motor vehicle, must be properly secured in a child safety device for a child of that age and size, or in a safety belt, whichever is appropriate. The driver of a motor vehicle is legally responsible for buckling in children.

Alaska's DUI Law

Driving under the influence, more commonly referred to as DUI, includes operating a motor vehicle, aircraft, or watercraft while under the influence of an alcoholic beverage, inhalant or controlled substance with a breath alcohol of .08% or higher, or when the driver's ability is impaired by alcohol or other controlled substances.

Driving under the influence and/or refusal to submit to a chemical test are serious offenses and are subject to severe penalties in the State of Alaska. Your license will be confiscated at the time of arrest and, upon conviction, you will be sentenced to at least three days in jail, a \$1,500 fine, and a three-month license revocation.

Do not drive after drinking or after taking drugs, even medicine. Your life, the life of someone you love, or the life of a stranger traveling in your path may depend on it.

Traffic Safety Emergency Laws

Under Alaska law, any operator of a motor vehicle involved in an accident must remain at the scene (except as necessary to get help) and must render assistance. Failure to do either may result in fines and/or imprisonment. Rendering assistance does not imply fault for the crash or accident.

"Good Samaritan" Law

Under Alaska law, if you render emergency aid to a person who reasonably appears to you to be in immediate need of such aid to avoid serious harm or death due to injury, illness, or emotional distress, you are not liable for civil damages as a result of an act or omission in rendering emergency aid. (You can be found liable, however, as result of gross negligence or reckless or intentional misconduct.)

Impeding Traffic

On a two-lane highway outside an urban area where passing is unsafe due to oncoming traffic or other conditions, the driver of a motor vehicle proceeding at less than the maximum authorized speed of traffic, and behind whom five or more vehicles are formed in a line, must turn off the roadway and allow the vehicles to pass.

Move Over or Slow Down for Emergency Vehicles

Drivers are required to move into the other lane, if possible, or slow down when approaching a parked emergency vehicle with flashing lights.

KODIAK ISLAND

KODIAK: **EMERGENCY: 911**
486-3281 - Hospital

PORT LIONS: **EMERGENCY: 911**
454-2275 - Clinic

ALASKA PENINSULA

CHIGNIK: 749-2273 - Public Safety
749-2282 - Clinic
911 - Emergency

ALEUTIAN ISLANDS

AKUTAN: 698-2208 - Clinic/Emergency

COLD BAY: 532-2000 - Clinic/Emergency

FALSE PASS: 548-2241 - Clinic/Emergency

KING COVE: **EMERGENCY: 911**
497-2210 - Police/Fire
497-2311 - Clinic

SAND POINT: **EMERGENCY: 911**
383-3151 - Clinic
383-3700 - Police

UNALASKA/ **EMERGENCY: 911**
DUTCH 581-1202 - Clinic
HARBOR: 581-2742 - Clinic
581-1233 - Public Safety

SOUTHEAST ALASKA

ANGOON: 788-3631 - Public Safety
788-3633 - Health Center 9 am-4 pm

HAINES: **EMERGENCY: 911**
766-2121 - Police
766-6300 - Clinic

HOLLIS: **EMERGENCY: 911**
Phone at Alaska Marine Hwy

Connected by road to HOLLIS:

CRAIG: **EMERGENCY: 911**
826-3330 - Police

HYDABURG: **EMERGENCY: 911**
285-3462 - Health Center

KLAWOCK: 755-2261 - Fire/EMS
755-4800 - Health Center

HOONAH: 945-3655 - Police
945-3235 - Health Center

SERVICES ALONG ALASKA'S MARINE HIGHWAY

If you become sick or injured aboard a vessel of the Alaska Marine Highway System, contact the Purser. You will receive prompt aid from the Emergency Trauma Technician every vessel carries. Transfer to a medical facility can be arranged, if necessary. Once you leave the ferry at any stop along its route, you will need to know who to contact in an emergency.

Most coastal communities have an ambulance service, physician, and a hospital. However, many smaller communities have neither a hospital nor a physician available. Almost every small community has trained emergency responders or a health clinic or room where minor conditions may be treated, sometimes with the advice of a physician by radio or telephone. These clinics are staffed by either a nurse, physician assistant, or community health aide.

If a chartered plane is necessary to transport you to a town with more comprehensive medical care, you will be expected to pay the cost of the charter.

MARINE HIGHWAY INDEX

SOUTHCENTRAL ALASKA

CORDOVA: EMERGENCY: 911
424-8000 - Hospital

HOMER: EMERGENCY: 911
235-8101 - Hospital

SELDOVIA: EMERGENCY: 911
234-7825 - Clinic

SEWARD: EMERGENCY: 911
224-5205 - Hospital

VALDEZ: EMERGENCY: 911
835-2249 - Hospital

WHITTIER: EMERGENCY: 911
472-2340 - Public Safety
VHF Channel 16 for Boats

Headlight Law

Currently, Alaska law requires you to use your headlights between one-half hour after sunset and one-half hour before sunrise; when low-light conditions make it difficult to see clearly 1000 feet ahead; and when driving on roadways that are posted with signs which require headlight use (such as the Seward Highway from Anchorage to the Kenai Peninsula). Turn on your headlights when you turn on your windshield wipers and remember that headlights not only help you see, but help others to see you. It is not required, but a good idea to drive with your headlights on at all times.

EMERGENCY EQUIPMENT FOR YOUR VEHICLE

- √ Flares and reflectors
- √ First aid kit with pocket knife, pocket mask and gloves
- √ Multi-purpose dry chemical fire extinguisher
- √ Tow cable (about 20 feet)
- √ Spare tire which is inflated to proper pressure
- √ Tool kit (pliers, screwdriver, wrenches)
- √ Flashlight and spare batteries
- √ Maps, pencil and paper
- √ Jumper cables
- √ Matches and candles
- √ Containers for liquids
- √ Facial and toilet tissue; paper towels; trash bags
- √ Drinking water and supply of non-perishable foods
- √ Transistor radio and extra battery
- √ Full tank of gasoline - try to keep tank half full
- √ Come-along
- √ Nylon rope (about 20 feet)
- √ Insect repellent
- √ Spare fuses for the vehicle

Additional Equipment for Winter Driving

- √ Chains
- √ Shovel
- √ Ice Scraper
- √ Bag of sand or kitty litter
- √ Blanket; sleeping bag
- √ Extra warm clothing

FOR CB RADIO OPERATORS

CB channels 9 and 11 are monitored for emergencies on most areas of the Alaska highway system. In some areas, CB channels 14 and 19 are monitored. Most truckers monitor channel 19.

FOR CELLULAR PHONE USERS

With a few exceptions, emergency response along the Alaska highway system may be accessed by dialing 9-1-1.

FOR MARINE EMERGENCIES

To be connected with a U.S. Coast Guard emergency operator, dial the following: on a cell phone: *CG; on a land line: 1 (800) 478-5555; at sea: channel 16.

IF YOU ARE THE FIRST AT A CRASH OR ACCIDENT

This is a list of things to do if you happen to arrive first at the scene of a crash or accident.

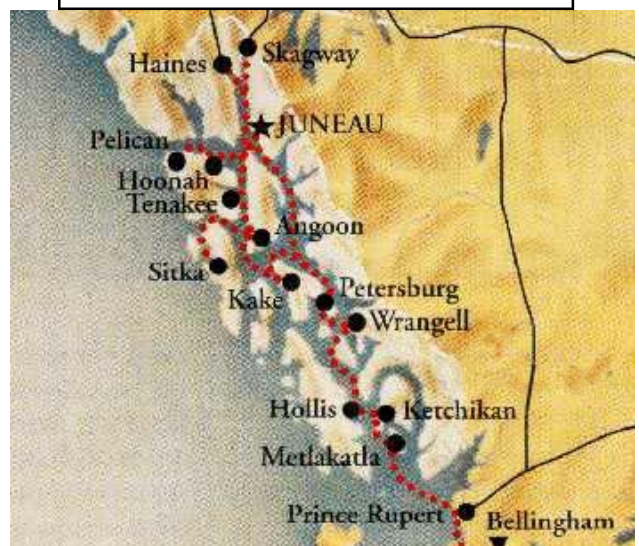
- √ Prevent a second crash by pulling off the road and turning on your flashers.
- √ Keep calm. You should remain at the scene, except as necessary to get help.
- √ Immediately attend to anyone who is not breathing or has severe bleeding.
- √ Notify police or state troopers as soon as possible. If someone is injured, call an ambulance immediately. (See accompanying map and directions.)
- √ Reduce fire hazards. Turn off ignition of wrecked cars. Do not smoke!
- √ Do not move the injured unless they are in a burning or submerged car. Unnecessary movement often complicates injuries.
- √ Search the area for victims thrown from vehicles and possibly hidden in the underbrush.
- √ Ask one or more bystanders to go back down the road a few hundred feet and slow approaching traffic.

PORTS ALONG THE ALASKA MARINE HIGHWAY SYSTEM

SOUTHCENTRAL ALASKA MARINE PORTS OF CALL



SOUTHEAST ALASKA MARINE PORTS OF CALL



KENAI SPUR ROAD

(Sterling Hwy Jct/Soldotna Y to End of Road)

MP 0 (Soldotna) to

MP 4 (Kenai City Limits)

Dial: 911

Central Emergency Services

MP 4 (Kenai City Limits) to

MP 15 (Kenai City Limits)

Dial: 911

Kenai Fire Dept - 105 S. Willow

MP 15 (Kenai City Limits) to

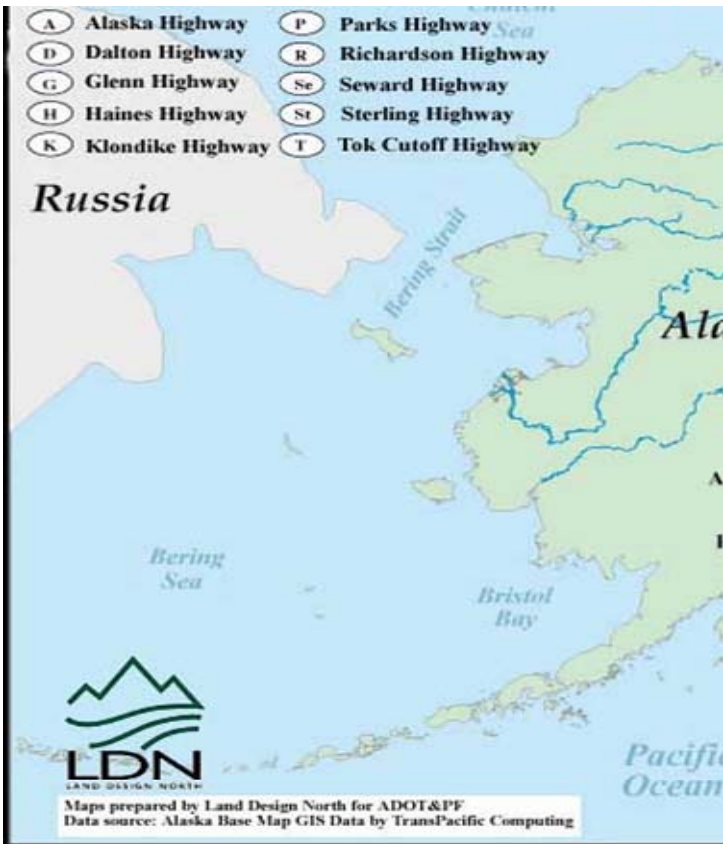
MP 41 (End of Road) to include side roads, platforms in the upper inlet and west side of Cook Inlet, Tyonek, and Beluga

Dial: 911

Nikiski Fire Dept - MP 17.9 & MP 26.8

FIRST AID INFORMATION

- + Make sure the Emergency Medical Service has been called.
- + Do **NOT** move the patient from the vehicle unless there is imminent danger of fire, explosion, or submersion.
- + If there is no urgent need to move the patient from the vehicle, tell him/her **NOT** to move until trained help arrives.
- + If possible, use bystanders with CPR and first aid training to care for the patient.
- + Make sure the patient is breathing normally. If the patient is not breathing normally, open the airway by tilting the head and lifting the chin. After opening the airway, give 2 full breaths.
- + After delivery of 2 rescue breaths, immediately begin cycles of 30 chest compressions and 2 rescue breaths. The CPR sequence is 30 compressions followed by 2 ventilations. Give compressions at a rate of 100 per minute.
- + Stop bleeding right away with direct pressure, but avoid direct contact with blood. Place a bulky dressing, such as a scarf or shirt, directly over the bleeding site and press firmly. If the dressing becomes soaked, place more dressing over it. Do **NOT** remove dressings already in place.
- + If injuries permit and bleeding has not been controlled by direct pressure, injured arms/legs should be elevated above the level of the patient's heart, if possible.
- + Keep the patient warm with blankets or sleeping bags. If injuries permit and patient is lying down, raise legs 8-10 inches.
- + **Recheck airway, breathing, circulation, and bleeding control often when caring for an injured person. Keep patient warm.**
- + As soon as possible, take the time to wash all blood off your body and change clothes.



MAJOR ALASKA AND YUKON HIGHWAYS

This map shows all the highways and major roads in and leading to Alaska. Several key communities are shown, but there are many more small towns, population centers, and coastal communities that are not on the road system. We recommend that travelers use a more complete map when visiting Alaska by road.

STERLING HIGHWAY

(AK 1) (Seward Hwy Jct to Homer)

MP 38 (Seward Hwy Jct) to

MP 62

Dial: 911

Cooper Landing Volunteer Ambulance and Rescue Squad
Moose Pass Volunteer Fire and EMS - MP 41

Emergency Call Box

MP 40 (Sterling Hwy)

MP 59 (Jean Lake) to

Kalifornsky Beach Road to
Central Emergency Services - MP 13

MP 119.7 and all roads within that area

Dial: 911

Central Emergency Services - MP 84 and MP 95

MP 119.7 to

MP 144

Dial: 911

Ninilchik Community Ambulance - Kingsley Rd

MP 144 to

MP 165

Dial: 911

Anchor Point Volunteer Fire Department & Rescue, Inc. - Milo Fritz Ave

MP 162 to

MP 179 (end of Homer Spit) and East End Rd to 20 mile and accessible back roads

Dial: 911

Homer Volunteer Fire Dept - MP 174

SEWARD HIGHWAY

(AK 1/AK9) (Anchorage to Seward) (AK 1) from Anchorage to Seward Hwy Jct then (AK 9) to Seward.

MP 127 (Downtown Anchorage) to

MP 75.2 (Anchorage Boundary/Ingram Creek)

Dial: 911

Anchorage Fire Dept

MP 100 (Bird Creek) to

MP 75.2 (Anchorage Municipality Boundary)

Dial: 911

Girdwood Fire Dept - MP 90

Emergency Call Boxes

MP 68.3 (Turnagain Pass) and

MP 56 (Hope Rd Jct)

MP 78.9 (Portage Glacier Rd to Whittier)

Dial: 911 or 472-2638 (Tunnel Operator)

Anton Anderson Memorial Tunnel Fire Dept. and Whittier Volunteer Ambulance Corp.

Emergency Call Boxes

Whittier Tunnel – every 300 feet

MP 72 to

MP 38 (Seward Hwy Jct)

Dial: 911

Cooper Landing Volunteer Ambulance and Rescue Squad & Moose Pass Volunteer Fire and EMS

MP 55 to

MP 30 (Moose Pass)

Dial: 911

Seward Volunteer Ambulance Corps

MP 38 (Seward Hwy Jct) to

MP 0 (Seward City Limits)

Dial: 911 or 224-3338

Seward Volunteer Ambulance Corps - MP 0

Dial: 911

Moose Pass Volunteer Fire and EMS - MP 16
Bear Creek Fire/EMS - MP 5.5



ALASKA HIGHWAY SYSTEMS

The Highway Index on the following pages lists the emergency numbers, by milepost number, that you can call to activate Alaska's emergency medical services system. By calling these numbers you can access emergency medical care and patient transport.

Use B band to call 911 for the Alaska State Troopers (AST) on the GLENN HIGHWAY/TOK CUT-OFF, Nelchina to Slana; RICHARDSON HIGHWAY, Paxson to Pump Station 12; and near Valdez and Cordova.

HIGHWAY INDEX

ABBREVIATIONS

AK	Alaska	JCT	Junction
AST	Alaska State Troopers	MP	Milepost
BC	British Columbia	RCMP	Royal Canadian Mounted Police
DEPT	Department	RD	Road
EMS	Emergency Medical Services	VOL	Volunteer
HWY	Highway	YT	Yukon Territory
KM	Kilometer		

GEORGE PARKS HIGHWAY

(AK 3) (Anchorage to Fairbanks)

Glenn Hwy (AK 1) to (AK 3) Jct

MP 35.3 (Glenn Hwy Jct) to

MP 52.3 (Big Lake Rd Jct)

Dial: 911

Wasilla Ambulance Service - 101 W. Swanson

Emergency Call Boxes

MP 35.3 - MP 200 and throughout the Matanuska Susitna Borough, highway signs give directions to 911 phones outside of Public Safety buildings. An emergency call box at MP 57.4 is located in the Houston Volunteer Fire Dept.

MP 52.3 (Big Lake Rd Jct) to

MP 64.5 (Nancy Lake Marina)

Dial: 911

Houston Ambulance Service - MP 57.4

MP 64.5 (Nancy Lake Marina) to

MP 91.5

Dial: 911

Willow Ambulance Service - MP 71

MP 91.5 (Railroad Crossing) to

MP 102 (Railroad Crossing)

Dial: 911 or 733-2256 (AST)

Talkeetna Ambulance Service - MP 14.5 on Talkeetna Spur Road

Emergency Call Box

MP 97 (Sunshine Station)

MP 102 (Railroad Crossing) to

MP 200 (Borough Boundary at Summit)

Dial: 911 or 733-2256 (AST)

Trapper Creek Ambulance Service - MP 114.5

MP 13.6 (Eagle River) to

MP 30.8 (Knik River Bridge/Old and New Glenn Hwy)

Dial: 911

Chugiak Volunteer Fire & Rescue Dept.

MP 30.8 (Knik River Bridge) to

MP 54.5 (Moose Creek)

Dial: 911

Palmer Ambulance Service - MP 41.5

Emergency Call Boxes

MP 30.8 - MP 120 and throughout the Matanuska-Susitna Borough, highway signs give directions to 911 phones outside of Public Safety Buildings.

MP 52 (Moose Creek) to

MP 120 (Tahneta Lake)

Dial: 911

Sutton Ambulance Service - MP 61

MP 118 - 137: service coverage by Matanuska-Susitna Borough/Copper River EMS Joint Venture

MP 120 (Tahneta Lake) to

MP 189 (Richardson Hwy South Jct)

Dial: 911 or 822-3263 (AST)

Copper River EMS - at Glennallen

(The Glenn Hwy continues to Tok via Richardson Hwy (AK 4) to Tok Cut-Off)

TOK CUT-OFF

(AK 1) Richardson Hwy North Jct/Gakona Jct to Tok)

MP 0 (Gakona Jct) to

MP 64 (Duffy's Tavern)

Dial: 911 or 822-3263 (AST)

Copper River EMS - at Glennallen

MP 64 (Duffy's Tavern) to

MP 125 (Tok)

Dial: 911 or 883-5111 (AST)

Tok Area EMS - MP 124.2

NABESNA ROAD

(MP 59.6 Tok Cut-Off to Nabesna)

MP 0 (Tok Cut-Off Jct) to

MP 45 (Nabesna)

Dial: 911 or 822-3263 (AST)

Copper River EMS - at Glennallen

ELLIOT HIGHWAY

(AK 2) (Fox to Manley Hot Springs)

MP 0 (Fox) to

MP 34 (Fairbanks-North Star Borough boundary sign)

Dial: 911 or 451-5100 (AST)

Steese Fire Dept

MP 34 (Fairbanks-North Star Borough boundary sign) to

MP 152 (Manley Hot Springs)

Dial: 911 or 451-5100 (AST)

DALTON HIGHWAY

(North Slope Haul Road)

MP 0 (Jct with Elliott Hwy) to

MP 414 (Prudhoe Bay/Deadhorse)

CB: Channel 19: ask for message relay to AST from
Alyeska guard facility or State Dept of
Transportation facility.

OLD GLENN HIGHWAY

(MP 29.6 Glenn Hwy Jct to Palmer)

MP 0 (Glenn Hwy Jct) to

MP 11

Dial: 911

Butte Ambulance Service - MP 6

MP 11 to

MP 18.6 (Arctic Ave Jct in Palmer)

Dial: 911

Palmer Ambulance Service

GLENN HIGHWAY

(AK 1) (Anchorage to Glennallen)

MP 0 (City of Anchorage) to

MP 30.8 (Knik River Bridge)

Dial: 911

CB: Channel 9 - REACT

Anchorage Fire Dept - MP 13.6

WARNING

The mudflats along the coast from Anchorage to Goose Bay (Knik Arm) exhibit quicksand-like conditions. It is extremely dangerous to walk on the beach or mudflats in this area.

GEORGE PARKS HIGHWAY (cont.)

MP 200 (Borough Boundary at Summit) to

MP 224 (Carlo Creek)

Dial: 768-2982 or 768-2202 (AST)

Cantwell Volunteer Ambulance - MP 210

MP 224 (Carlo Creek) to

MP 270 (Bear Creek)

Dial: 911 or 683-2223 or 683-2232 (AST)

Tri-Valley Volunteer Fire Dept - MP 248.9

MP 270 (Bear Creek) to

MP 292

Dial: 911 or 582-0911 or 582-2288

1-800-811-0911 (AST)

Anderson Volunteer Fire Dept/EMS Ambulance -
MP 283, located 6 miles off Parks Hwy.

MP 292 to

MP 325 (North Star Borough Boundary)

Dial: 911 or 832-1911 or 832-5632

Nenana Volunteer Fire/EMS Dept - MP 304.5

MP 325 (North Star Borough Boundary) to

MP 356 (Sheep Creek Rd)

Dial: 911 or 474-1911

Chena Goldstream Fire & Rescue

MP 354.5 to

MP 359 (Peger Rd)

Dial: 911 or 474-1911

University Fire Dept

MP 359 (Mitchell Expressway/Peger Rd)

Dial: 911 or 459-6500

Fairbanks Fire Dept

DENALI HIGHWAY

(AK 8) (Paxson to Cantwell)

MP 0 (Paxson) to

MP 78 (Susitna River)

Dial: 911 or 822-3262 (AST)

Copper River EMS - at Glennallen

DENALI HIGHWAY (cont.)

MP 78 (Susitna River) to
MP 135 (Cantwell)
Dial: 768-2982 or 768-2202 (AST)
Cantwell Volunteer Ambulance - MP 132.5

DENALI PARK ROAD

(Denali Park Entrance to Kantishna)
Summer Coverage Only:
MP 1 (George Parks Hwy Jct) to
MP 90 (Kantishna)
Winter Coverage Only:
MP 1 (George Parks Hwy Jct) to
MP 3.4
Dial: 911
Denali National Park Ambulance

RICHARDSON HIGHWAY

(AK 4) (Valdez to Fairbanks)
Richardson Highway (AK 4) Joins Alaska Highway (AK 2)
From Delta Junction to Fairbanks
MP 0 (Valdez) to
MP 52
Dial: 911 or 835-4560
Valdez Fire Dept - MP 0

MP 52 to
MP 200 (Summit Lake)
Dial: 911 or 822-3263 (AST)
Copper River EMS - at Glennallen

MP 200 to
MP 295
Dial: 911 or 895-4656 or 895-4800 (AST)
Delta Rescue Squad - MP 265.5

MP 295 (Richardson Road House) to
MP 341 (Eielson AFB Main Gate)
Dial: 911
Salcha Rescue

ALASKA HIGHWAY (cont.)

MP 1314 (Tok) to
MP 1369 (Dot Lake)
Dial: 911 or (907) 883-5111 (AST)
Tok Area EMS - MP 1314

MP 1369 (Dot Lake)
MP 493 (Delta Junction)
Dial: 911 or 895-4800 (AST)
Delta Rescue Squad - MP 265.5
Richardson Hwy

CHENA HOT SPRINGS ROAD

(Steese Hwy Jct to Chena Hot Springs)
MP 0 (Steese Hwy Jct) to
MP 10
Dial: 911 or 451-5100 (AST)
Steese Fire Dept

MP 10
MP 59 (Chena Hot Springs Resort)
Dial: 911 or 451-5100 (AST)
Steese Fire Dept and Two Rivers Rescue
Emergency Call Box
MP 23.5 (Valley Center)

STEESE HIGHWAY

(AK 6) (Fairbanks to Circle)
MP 2 (Old Steese Hwy) to
MP 86 (Borough Boundary/12 Mile Summit)
Dial: 911 or 451-5100 (AST)
Steese Fire Dept

MP 86 (Borough Boundary/12 Mile Summit) to
MP 110
Dial: 911 or 451-5100 (AST)

MP 110 to
MP 162 (Circle)
Dial: 911 or 451-5100 (AST)
CB: Channels 2, 19, 22: ask for relay to AST
Central Emergency Team

ALASKA HIGHWAY (cont.)

KM 946 (BC/Yukon Border) to
KM 1180 (Swift River, YT)
Dial: 536-4444 or 536-5555 (RCMP)
Watson Lake Medical Emergency - KM 1017

KM 1180 (Swift River) to
KM 1366 (Jake's Corner)
Dial: 390-4444 or 390-5555 (RCMP)
Teslin Medical Emergency - KM 1293

KM 1366 (Jake's Corner) to
KM 1558 (Mendenhall)
Dial: 911
Whitehorse Ambulance - KM 1474

KM 1558 (Mendenhall) to
KM 1700 (near Kluane Lake Lodge)
Dial: 634-4444 or 634-5555 (RCMP)
Haines Jct Medical Emergency - KM 1635

KM 1700 (near Kluane Lake Lodge) to
KM 1860 (Longs Creek)
Dial: 841-4444
Destruction Bay Medical Emergency -
KM 1742
Collect: 634-5555 (RCMP)

KM 1860 (Longs Creek) to
KM 1968 (Yukon/Alaska Border)
Dial: (403) 862-5555 (RCMP)
Beaver Creek Medical Emergency - KM 1934
(403) 862-4444 - Health Centre
(403) 862-3333 - Ambulance

MP 1221 (Alaska/Yukon Border) to
MP 1264 (Northway Jct)
First Responder Only
Dial: 883-5111 (AST) or 774-2252
Alcan Rescue at U.S. Customs - MP 1221

MP 1264 (Northway Jct) to
MP 1314 (Tok)
Dial: 911 or (907) 883-5111 (AST)
Tok Area EMS - MP 1314

RICHARDSON HIGHWAY (cont.)

MP 341 (Eielson AFB Main Gate) to
MP 359 (Badger Rd/City Limits)
Dial: 911
North Pole Fire Dept
North Star Volunteer Fire Dept

MP 359 (Badger Rd/City Limits)
Dial: 911
Fairbanks Fire Dept

EDGERTON HWY (AK 10) & McCARTHY ROAD

(MP 82.6 Richardson Hwy Jct to Chitina, McCarthy Rd from Chitina to Kennicott River - McCarthy)
MP 0 (Richardson Hwy Jct) to
MP 33 (Chitina)

MP 0 (McCarthy Rd) to
MP 58.3 (Kennicott River)
Dial: 911 or 822-3262 (AST)
Copper River EMS - at Glennallen

KLONDIKE HWY 2 OR SKAGWAY/CARCROSS ROAD

(AK 98, BC 2, & Yukon 2)
(Skagway, Alaska to Yukon Highway 2 Junction North of Whitehorse)
MP 0 (Skagway) to
MP 27/DM 44 (Railroad Crossing)
Dial: 911
Skagway Fire Dept - MP 0

KM 44 (Railroad Crossing) to
KM 138 (Annie Lake Rd)
Dial: (403) 821-5555 (RCMP)
(403) 821-4444 (Medical Emergency)
Carcross Ambulance - KM 105

KM 138 (Annie Lake Rd) to
KM 192 (AK Hwy Jct North - Whitehorse)
Dial: 911
Whitehorse Ambulance - KM 178

YUKON HIGHWAY 2

(Alaska Highway Junction North of Whitehorse, Yukon Territory to Dawson City, Yukon Territory)

KM 192 (AK Hwy Jct - Whitehorse) to

KM 281 (Fox Lake)

Dial: 911

Whitehorse Ambulance - KM 178

KM 281 (Fox Lake) to

KM 465 (Pelly Crossing)

Dial: 863-4444 or 863-5555 (RCMP)

Carmacks Medical Emergency - KM 357

KM 465 (Pelly Crossing) to

KM 590 (McQuesten River Lodge)

Dial: 996-4444 or 996-5555 (RCMP)

Mayo Medical Emergency

KM 590 (McQuesten River Lodge) to

KM 720 (Dawson City)

Dial: 993-4444 or 993-5555 (RCMP)

Dawson City Medical Emergency - KM 718

YUKON HIGHWAY 9* OR TOP OF THE WORLD HIGHWAY

(Dawson City, YT to Alaska Border)

**Closed in Winter*

KM 0 (Dawson City) to

KM 112 (Alaska Border/Taylor Hwy)

Dial: 993-4444 or 993-5555 (RCMP)

Dawson City Medical Emergency - KM 0

TAYLOR HIGHWAY

(AK 5*) (Tetlin Jct to Eagle and Jack Wade Jct to Alaska Border)

**Closed in Winter*

MP 0 (Tetlin Jct) to

MP 113 (O'Brien Creek Bridge)

Dial: 911 or 883-5111 (AST)

Tok Area EMS - MP 1314 Alaska Hwy

MP 113 (O'Brien Creek Bridge) to

MP 161 (Eagle)

Dial: 547-2211 or 547-2243

CB: Channel 21

Eagle EMS

HAINES HIGHWAY

(AK 7, BC 4, & Yukon 3) (Haines, AK to Haines Junction YT)

MP 0 (Haines) to

MP 40 (DM 72) (AK/Canada Border)

Dial: 911 or 766-2121

Haines Volunteer Fire Dept - MP 0

KM 72 (MP 40) (AK/Canada Border) to

KM 256 (Haines Jct)

Dial: 634-4444 or 634-5555 (RCMP)

Haines Jct Medical Emergency - DM 256

ALASKA HIGHWAY

(BC 97, Yukon 1, & AK 2)

(Dawson Creek, BC to Delta Jct, AK)

KM 0 (Dawson Creek, BC) to

KM 38 (Kiskatinaw Park)

Dial: 782-2211

Provincial Ambulance Service - KM 0

KM 38 (past Kiskatinaw Park) to

KM 162 (Wonowon)

Dial: 785-2079

British Columbia Ambulance Service - KM 75

(Fort St. John)

KM 162 (Wonowon) to

KM 363 (Bougie Creek Bridge)

Dial: 785-2079

British Columbia Ambulance Service - KM 228

(Pink Mountain)

KM 363 (Bougie Creek Bridge) to

KM 631 (Summit Lake)

Dial: 774-2344

British Columbia Ambulance Service - KM 460

(Fort Nelson)

KM 622 (Summit Lake) to

KM 946 (BC/Yukon Border)

Dial: 232-5351

British Columbia Ambulance Service - KM 674

(Toad River)