

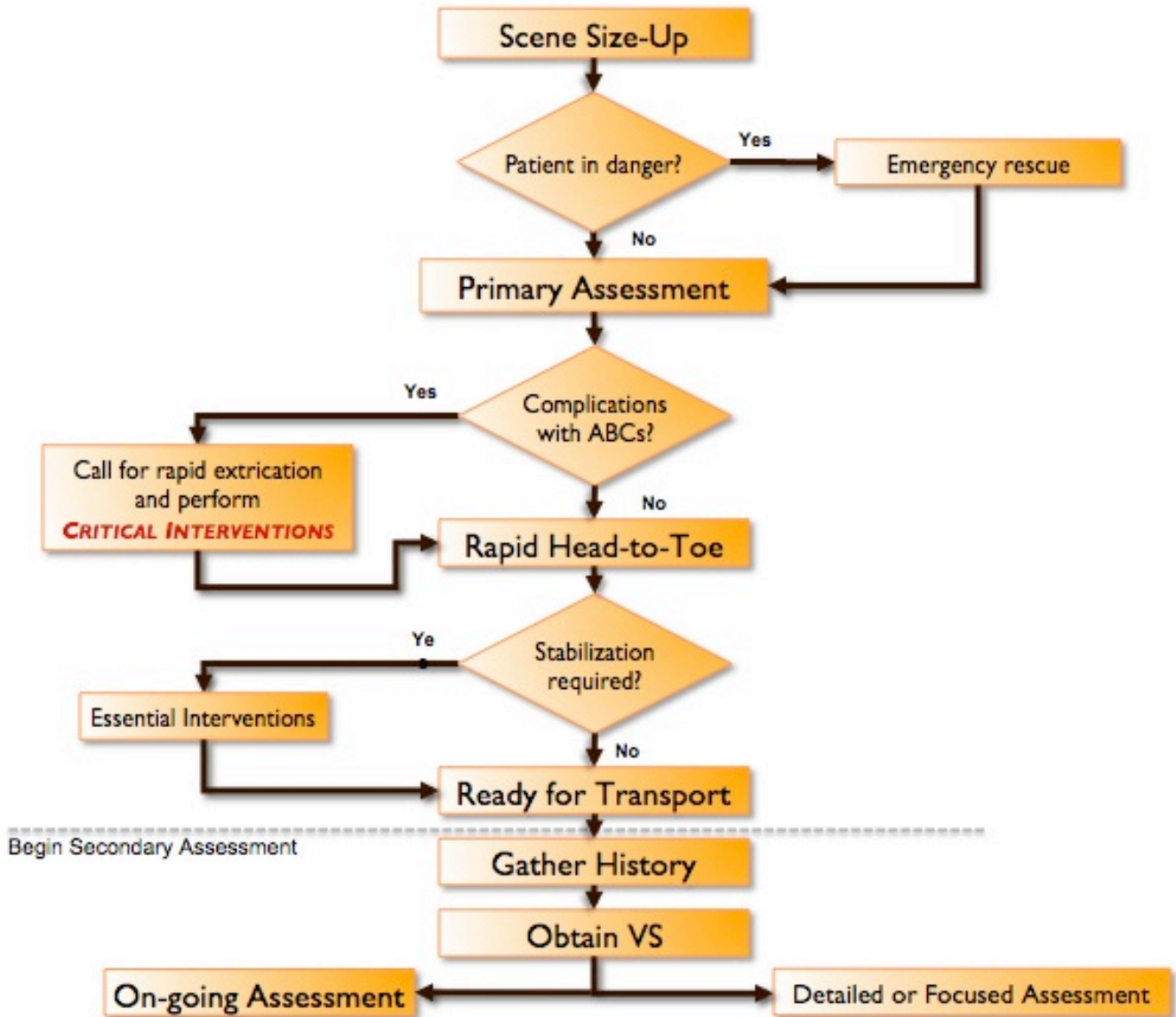


# First Few Moments

managing the scene of a motor vehicle crash

Safety • Management • Triage • Care

## PATIENT ASSESSMENT ALGORITHM



"First Few Moments" and all material and intellectual property associated with

© 2009 Kyle David Bates

Reproduction in part or in whole, for commercial or educational purposes, strictly prohibited without expressed written permission of the author(s)



# First Few Moments

managing the scene of a motor vehicle crash

Safety • Management • Triage • Care

## PATIENT ASSESSMENT

<b>SCENE SIZE-UP</b>	Take body substance isolation		
	Determine that the scene/situation is safe and mitigate hazards		
	Determine the mechanism of injury or nature of illness		
	Determine the number of patients		
	Determine the need for additional help, resources, or equipment		
<b>INITIAL ASSESSMENT</b>	Form a general impression of the patient		
	Determine responsiveness / level of consciousness (AVPU)		
	Control cervical spine if appropriate		
	<b>Airway</b>	Assure an open airway and assess the airway	
		Suction the airway as needed	
		Insert an airway adjunct as indicated	
	<b>Breathing</b>	Assess breathing	
		Assure adequate ventilation (lung sounds/rate/depth/effort)	
		Initiate appropriate oxygen therapy	
		Manage injury that may hinder breathing/ventilation	
	<b>Circulation</b>	Assess pulse (Present? rate/rhythm/quality)	
		Assess skin (color, temperature, condition)	
		Assess/control uncontrolled external hemorrhage	
Initiate shock management			
Identify priority of the patient and makes a transport decision			
<b>RAPID TRAUMA ASSESSMENT</b>	<b>Head &amp; Neck</b>	Assess face and head for injuries	
		Assess neck / cervical spine for injuries	
		Assess jugular veins and trachea	
		Apply properly sized cervical collar	
	<b>Chest</b>	Inspect for injuries and symmetry	
		Palpate for crepitus, injuries, and symmetry	
		Auscultate lung sounds (if not done earlier)	
		Listen for decreased heart sounds	
	<b>Abdomen</b>	Inspect for injuries and palpate for rigidity and tenderness	
	<b>Pelvis</b>	Assess for TIC	
		Assess genitalia/perineum	
	<b>Extremities</b>	Inspect and palpate all 4 extremities for injuries	
		Assess CMS in all 4 extremities	
	<b>Posterior</b>	Assess for DCAP-BTLS	
<b>Neurological</b>	Assess pupils for equality and reactivity		
	Determine Glasgow Coma Scale		
	Determine emotional state		
Provide <b>CRITICAL</b> interventions to stabilize pt including initiating transport			
Obtain or attempt to obtain a S.A.M.P.L.E. history			
Obtain pulse, respiration, BP			
	Perform an on-going assessment of patient and interventions		
	Perform a detailed physical exam		
	Manage secondary injuries		

"First Few Moments" and all material and intellectual property associated with

© 2009 Kyle David Bates

Reproduction in part or in whole, for commercial or educational purposes, strictly prohibited without expressed written permission of the author(s)